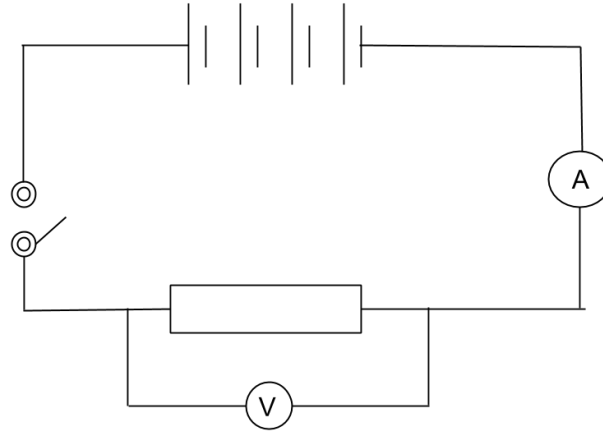


Ohm's Law



Build this circuit



Starting with the main battery set at 1.5 Volts, record the current going into the resistor and record the pd across the resistor in the table below.

Now repeat changing the main battery voltage

pd across the resistor measured in volts	Current going into resistor measured in amperes	

Conclusions

Area for writing conclusions, featuring horizontal dotted lines for text entry.